

INVITATION FOR BIDS  
for  
MALUHIA  
REPALCE EXIT DOORS  
1027 Hala Drive  
Honolulu, Oahu, Hawaii

FY 23M-0121

ADDENDUM NO. 2

MARCH 27, 2024

The items listed hereinafter are hereby made a part of the contract for the above project and shall govern the work, taking precedence over previously issued plans and specifications governing the items mentioned:

A. DRAWINGS

1. Sht. A-4.0 – Revise Door Schedule. See attached Sht. 4.0, delta 2, dated 3/25/24.

B. CLARIFICATIONS

The following questions were received in writing concerning clarifications to the contract documents. Clarifications will be addressed in amendment.

1. Question: Should DTM (Direct to Metal) paint be used? Normal latex can fail sooner.

*Answer: The metal doors and frames for this project are pre-primed. However, specs call for a primer and 2 finish coats. All primers and paints should be low VOC or no VOC. We prefer latex as project will be occupied and odors could be a problem.*

2. Question: Door types call for fire rated doors, however, does not list fire rating. Please clarify.

*Answer: See revised Door Schedule. All fire rated doors and frames shall be B-Label 1-1/2 hrs.*

3. Question: D/SB1 And D/SB2 mention New Door Closure. Are these automatic or motor operated? Will any brand be specified?

*Answer: Addendum No. 1 issued a revised Section. 08710 Finish Hardware and added HW-012 for these doors. All information is provided.*

4. Question: Will infection control barriers and other measures be required similar to the guidelines in DHA ICRA 2.0?

*Answer: Infection control barriers are not required but dust barriers should be installed to prevent dust from escaping the work area.*

END OF ADDENDUM NO. 2

ADDENDUM NO. 2

DOOR SCHEDULE

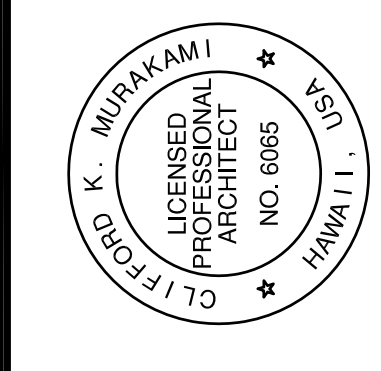
DOOR NO.	SIZE			DOOR TYPE	CONST. TYPE	FIRE RATING (B-LABEL)	HARDWARE NO.	DETAILS			REMARKS
	WIDTH	HEIGHT	THK					HEAD	JAMB	THRESHOLD	
D/SB1	3'-10"	7'-0"	1 3/4"	2	M	1 1/2 HR	012	B/A-4.0	B/A-4.0 SIM.	C/A-4.0	4"x25" VISION PANEL & (NEW DOOR CLOSURE)
D/SB2	3'-10"	7'-0"	1 3/4"	1	M	1 1/2 HR	012	B/A-4.0	B/A-4.0 SIM.		(NEW DOOR CLOSURE) NO THRESHOLD
D/SB3	5'-0"	7'-0"	1 3/4"	3	M		011	B/A-4.0	B/A-4.0 SIM.	C/A-4.0	
D/SB4	5'-0"	7'-0"	1 3/4"	3	M		011	B/A-4.0	B/A-4.0 SIM.	C/A-4.0	
D/SB5	5'-0"	7'-0"	1 3/4"	3	M		011	B/A-4.0	B/A-4.0 SIM.	C/A-4.0	
D/SB6	3'-7 1/2"	7'-0"	1 3/4"	2	M	1 1/2 HR	003	B/A-4.0	B/A-4.0 SIM.	C/A-4.0	4"x25" VISION PANEL
D/SB6A	3'-7 1/2"	7'-0"	1 3/4"	2	M	1 1/2 HR	002	B/A-4.0	B/A-4.0 SIM.	C/A-4.0	4"x25" VISION PANEL
D/SB7	7'-0"	6'-10"	1 3/4"	5	M		004	B/A-4.0	B/A-4.0 SIM.	C/A-4.0	
<b>SUB-BASEMENT</b>											
D/B1	3'-10"	7'-0"	1 3/4"	1	M	1 1/2 HR	001	B/A-4.0	B/A-4.0 SIM.	C/A-4.0	
D/B2	3'-10"	7'-0"	1 3/4"	1	M	1 1/2 HR	002	B/A-4.0	B/A-4.0 SIM.		NO THRESHOLD
D/B3	3'-8"	7'-0"	1 3/4"	2	M	1 1/2 HR	003	B/A-4.0	B/A-4.0 SIM.	C/A-4.0	4"x25" VISION PANEL
D/B4	4'-0"	7'-0"	1 3/4"	2	M	1 1/2 HR	003	B/A-4.0	B/A-4.0 SIM.	C/A-4.0	4"x25" VISION PANEL
D/B5	6'-0"	7'-0"	1 3/4"	3	M	1 1/2 HR	005	B/A-4.0	B/A-4.0 SIM.		
D/B6	6'-0"	7'-0"	1 3/4"	4	M	1 1/2 HR	006	B/A-4.0	B/A-4.0 SIM.		
D/B7	3'-10"	7'-0"	1 3/4"	2	M	1 1/2 HR	005	B/A-4.0	B/A-4.0 SIM.		
<b>BASEMENT</b>											
D/F1	3'-10"	7'-0"	1 3/4"	1	M	1 1/2 HR	001	B/A-4.0	B/A-4.0 SIM.	C/A-4.0	
D/F2	3'-10"	7'-0"	1 3/4"	1	M	1 1/2 HR	002	B/A-4.0	B/A-4.0 SIM.		NO THRESHOLD
D/F3	3'-7 1/2"	7'-0"	1 3/4"	2	M	1 1/2 HR	003	B/A-4.0	B/A-4.0 SIM.	C/A-4.0	4"x25" VISION PANEL
D/F4	4'-0"	7'-0"	1 3/4"	2	M	1 1/2 HR	007	B/A-4.0	B/A-4.0 SIM.	C/A-4.0	4"x25" VISION PANEL
D/F5	3'-0"	7'-0"	1 3/4"	2	M	1 1/2 HR	008	B/A-4.0	B/A-4.0 SIM.	C/A-4.0	
D/F6	3'-0"	7'-0"	1 3/4"	2	M	1 1/2 HR	001	B/A-4.0	B/A-4.0 SIM.	C/A-4.0	4"x25" VISION PANEL
D/F7	3'-10"	7'-0"	1 3/4"	2	M	1 1/2 HR	001	B/A-4.0	B/A-4.0 SIM.	C/A-4.0	4"x25" VISION PANEL
D/F8	3'-10"	7'-0"	1 3/4"	2	M	1 1/2 HR	009	B/A-4.0	B/A-4.0 SIM.	C/A-4.0	4"x25" VISION PANEL
D/F9	3'-10"	7'-0"	1 3/4"	1	M	1 1/2 HR	001	B/A-4.0	B/A-4.0 SIM.	C/A-4.0	
D/F10	3'-10"	7'-0"	1 3/4"	1	M	1 1/2 HR	002	B/A-4.0	B/A-4.0 SIM.		NO THRESHOLD
<b>FIRST FLOOR</b>											
D/S1	3'-10"	7'-0"	1 3/4"	1	M	1 1/2 HR	001	B/A-4.0	B/A-4.0 SIM.	C/A-4.0	
D/S2	3'-10"	7'-0"	1 3/4"	1	M	1 1/2 HR	002	B/A-4.0	B/A-4.0 SIM.		NO THRESHOLD
D/S3	3'-0"	7'-0"	1 3/4"	2	M	1 1/2 HR	010	B/A-4.0	B/A-4.0 SIM.	C/A-4.0	4"x25" VISION PANEL
D/S4	3'-0"	7'-0"	1 3/4"	2	M	1 1/2 HR	002	B/A-4.0	B/A-4.0 SIM.	C/A-4.0	4"x25" VISION PANEL
D/S5	4'-0"	7'-0"	1 3/4"	1	M	1 1/2 HR	002	B/A-4.0	B/A-4.0 SIM.	C/A-4.0	
D/S6	3'-10"	7'-0"	1 3/4"	1	M	1 1/2 HR	001	B/A-4.0	B/A-4.0 SIM.	C/A-4.0	
D/S7	3'-10"	7'-0"	1 3/4"	1	M	1 1/2 HR	002	B/A-4.0	B/A-4.0 SIM.		NO THRESHOLD
<b>SECOND FLOOR</b>											
D/T1	3'-10"	7'-0"	1 3/4"	1	M	1 1/2 HR	001	B/A-4.0	B/A-4.0 SIM.	C/A-4.0	
D/T2	3'-10"	7'-0"	1 3/4"	1	M	1 1/2 HR	002	B/A-4.0	B/A-4.0 SIM.		NO THRESHOLD
D/T3	3'-0"	7'-0"	1 3/4"	2	M	1 1/2 HR	002	B/A-4.0	B/A-4.0 SIM.	C/A-4.0	4"x25" VISION PANEL
D/T4	4'-0"	7'-0"	1 3/4"	2	M	1 1/2 HR	002	B/A-4.0	B/A-4.0 SIM.	C/A-4.0	4"x25" VISION PANEL
D/T5	3'-10"	7'-0"	1 3/4"	1	M	1 1/2 HR	001	B/A-4.0	B/A-4.0 SIM.	C/A-4.0	
D/T6	3'-10"	7'-0"	1 3/4"	1	M	1 1/2 HR	002	B/A-4.0	B/A-4.0 SIM.		NO THRESHOLD
<b>THIRD FLOOR</b>											

DOOR ABBREVIATIONS:  
M METAL

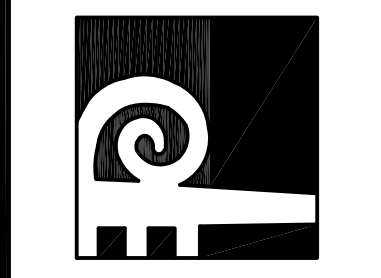
NOTE:  
CONTRACTOR TO FIELD VERIFY EXISTING CONDITIONS & ROUGH OPENINGS PRIOR TO ORDERING & INSTALLING NEW DOORS & FRAMES.

DATE	3/20/24
REV. NO.	2
ADDENDUM #1	
ADDENDUM #2	

This work was prepared by me or under my direct supervision and I am a duly Licensed Professional Architect in the State of Hawaii.  
Signature: \_\_\_\_\_  
LICENSE EXPIRES: APR. 30, 2024

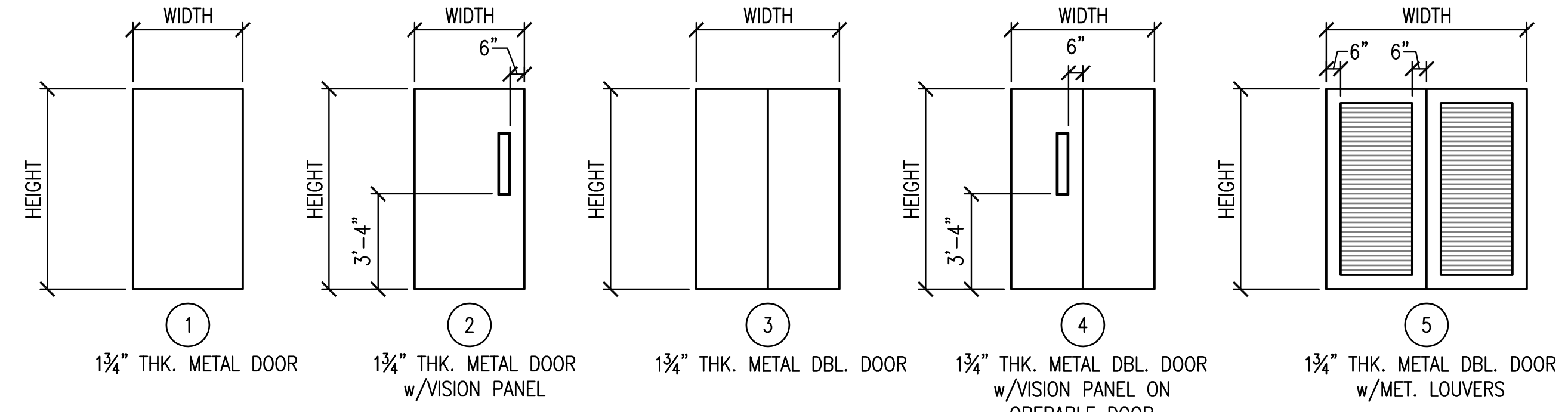


**Pacific Architects, Inc.**  
2020 South King Street  
Honolulu, Hawaii 96826  
808-949-1601  
fax 808-942-0054

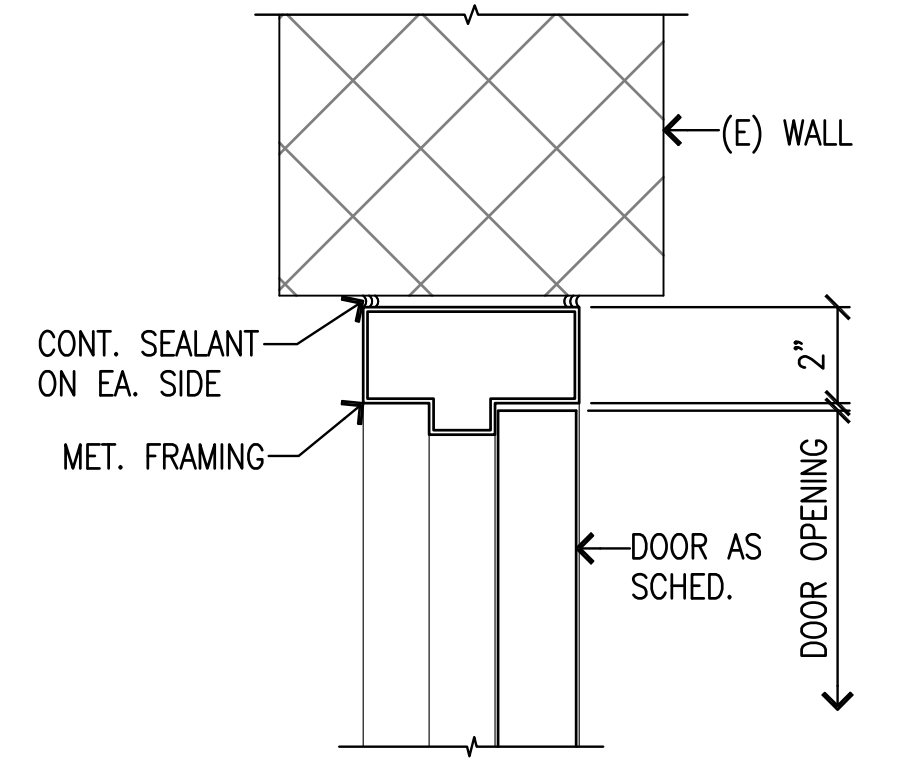


PROJECT TITLE: MALUJIA REPLACE EXIT DOORS  
1027 HALA DR.  
HONOLULU, HI 96817  
T.M.K.: 01 - 06 - 09 - 04  
SHEET TITLE: DOOR SCHEDULE, DOOR TYPE & DETAILS

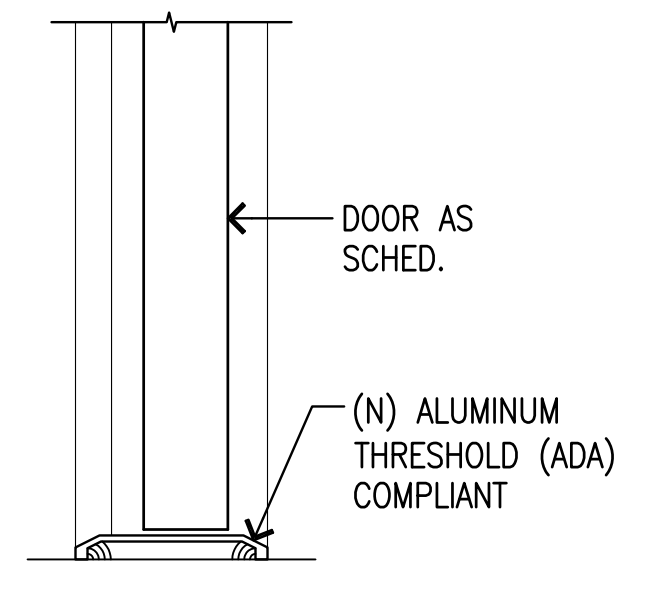
DATE: MARCH 2014  
SCALE: AS SHOWN  
DRAWN GA/MM/MT CHECK DM  
SHEET: **A-4.0**  
OF SHEETS



**A** DOOR TYPES  
A-4.0 SCALE: 1/4" = 1'-0"



**B** HEAD DETAIL (JAMB SIM.)  
A-4.0 SCALE: 3" = 1'-0"



**C** THRESHOLD DETAIL  
A-4.0 SCALE: 3" = 1'-0"

